

## uPASS Reach AVI Long Distance Reader

### Product Description

The uPASS Reach reader offers long-range vehicle identification up to 5 metres using the latest UHF technology. Based on battery-free passive UHF, the uPASS Reach reader offers a cost effective and enduring solution for parking access.

The system is based on a uPASS Reach reader and windscreen-mounted UHF tags. The reader is installed next to the gate or barrier that is being controlled at a maximum height of 2 metres. A long-range passive UHF tag visible in direct line of sight will be identified up to 5 metres. The UHF tags are battery and maintenance free.

The reader output allows the access control system to open the gate/barrier when an authorised vehicle arrives without the need for the driver to present a card or badge. The built-in high intensity LED provides the user visual feedback that the tag has been read.



### Features

- ▶ Consistent reading up to 5m
- ▶ On-site adjustable reading
- ▶ Elegant slim design
- ▶ LED and audible read indication
- ▶ Weatherproof housing
- ▶ Operates with passive UHF tags (EPC GEN 2)
- ▶ Self-adhesive windscreen tags
- ▶ Hand-held tags with dual-technology options

### Specifications

#### Electrical

Supply Voltage:	12 to 24V DC +10% (linear supply recommended)
Current cons:	1A @ 12V DC, 0.5A @ 24V DC

#### Physical

Dimensions:	200 x 220 x 45 mm (W x H x D)
Weight:	0.75 kg
Housing:	Aluminium chassis with UL94 ABS cover
Protection:	IP65
Operating temp:	-30°C to +60°C
Mounting:	Wall mounting as default. Pole mounting and adjustable mounting kits available

#### Inputs/Outputs

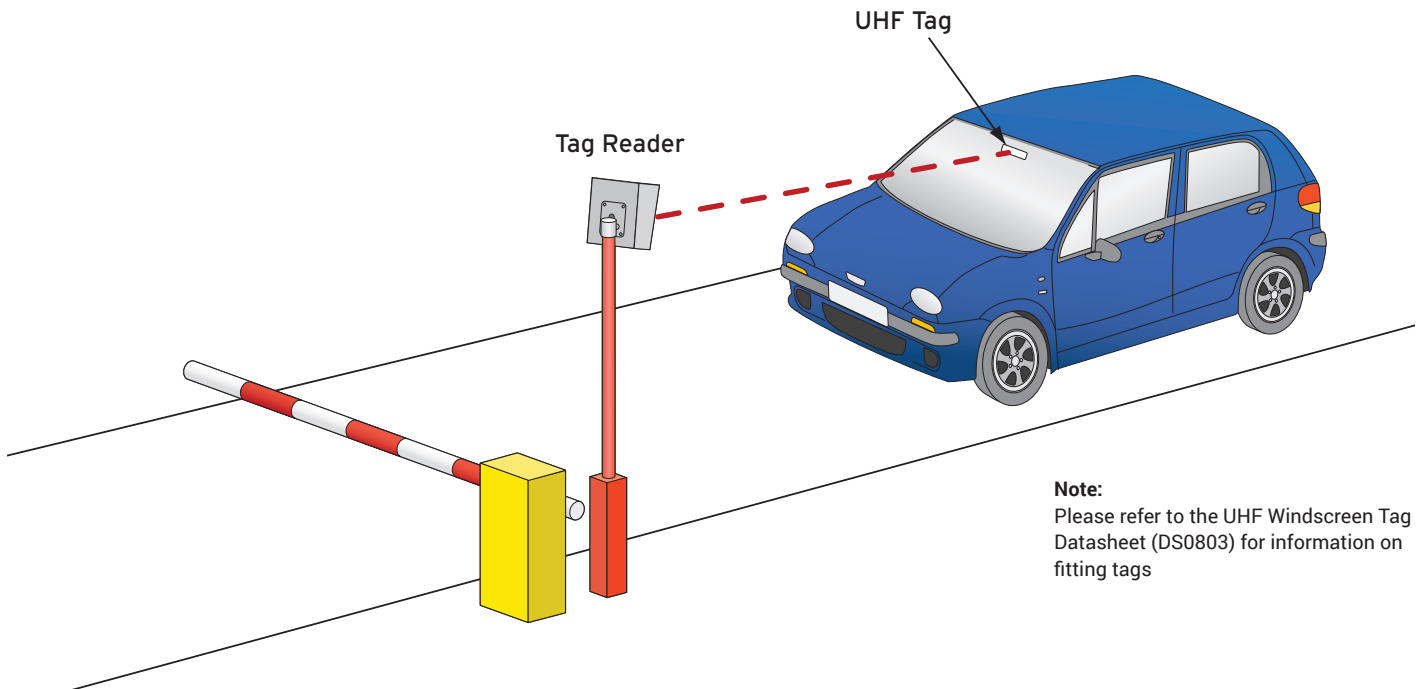
Input:	1 dry contact or TTL
Relay output:	1 relay output (NO, common, NC), 24V DC, 2A
Output:	Wiegand or Clock & Data (depending upon programmed tag format)
Cable length:	Wiegand 150m. 22AWG

#### Operational

Operating freq:	865 - 868 MHz (902-928 MHz option available)
Detection range:	Up to 5 metres with passive uPASS UHF tags

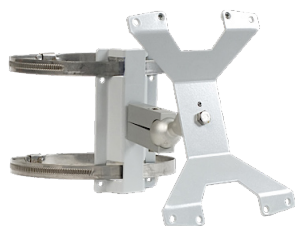
## uPASS Reach AVI Long Distance Reader

### Application



### Ordering Information

<b>9942319</b>	Long range AVI reader with identification at up to 5 metres. ISO 18000 EPC Gen2 compliant.	<b>9215255</b>	Long Range UHF Exterior Tag. Suitable for mounting on headlights.
<b>9875840</b>	uPASS Reach mounting set with adjustable arm.	<b>9943943</b>	Long range UHF tag in ISO card format, not suitable for windshield mounting. Programmed with secured customer specific ID number.
<b>7591152</b>	uPASS Reach weather protection hood.	<b>9942343</b>	UHF - Mifare 1K Card. Credit card sized ISO credential with combined UHF and HF Mifare 1K technologies.
<b>9945946</b>	Long range UHF tag for windshield mounting. Programmed with secured customer specific ID number.	<b>9943960</b>	UHF - Legic Advant Card. Credit card sized ISO credential with combined UHF and HF Legic technologies.
<b>9946918</b>	Tamper proof Long range UHF tag for windshield mounting. Destroys upon removal.	<b>9942360</b>	UHF - EM4102 Card. Credit card sized ISO credential with combined UHF and LF EM4102 technologies.
<b>9219641</b>	UHF Vehicle identification tag designed for mounting on the exterior of the vehicle. Offers high performance on metal surfaces .		



**9875840**



**7591152**